



British
Waterways
Dyfrffyrdd
Prydain

British Waterways and Biodiversity

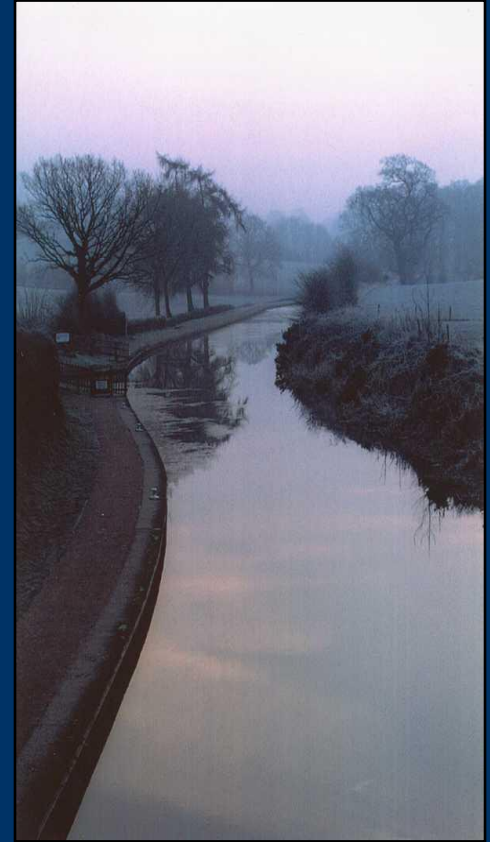
Stuart Moodie

Ecologist Wales and Border Counties

6th March 2006



- British Waterways
- Wales and Border Counties - Cheshire
- What is British Waterways doing to promote biodiversity



- ‘British Waterways is a public corporation responsible to the UK Government and Scottish Government to maintain and manage the waterways so that they fulfill their full economic, social and environmental & heritage potential’.
- **1968 Transport Act:**
 - With a view to securing the general availability of the commercial and cruising waterways for public use, it shall be the duty of the Waterways Board, subject to the provisions of this section—
 - (a) to maintain the commercial waterways in a suitable condition for use by commercial freight-carrying vessels; and
 - (b) to maintain the cruising waterways in a suitable condition for use by cruising craft, that is to say, vessels constructed or adapted for the carriage of passengers and driven by mechanical power.

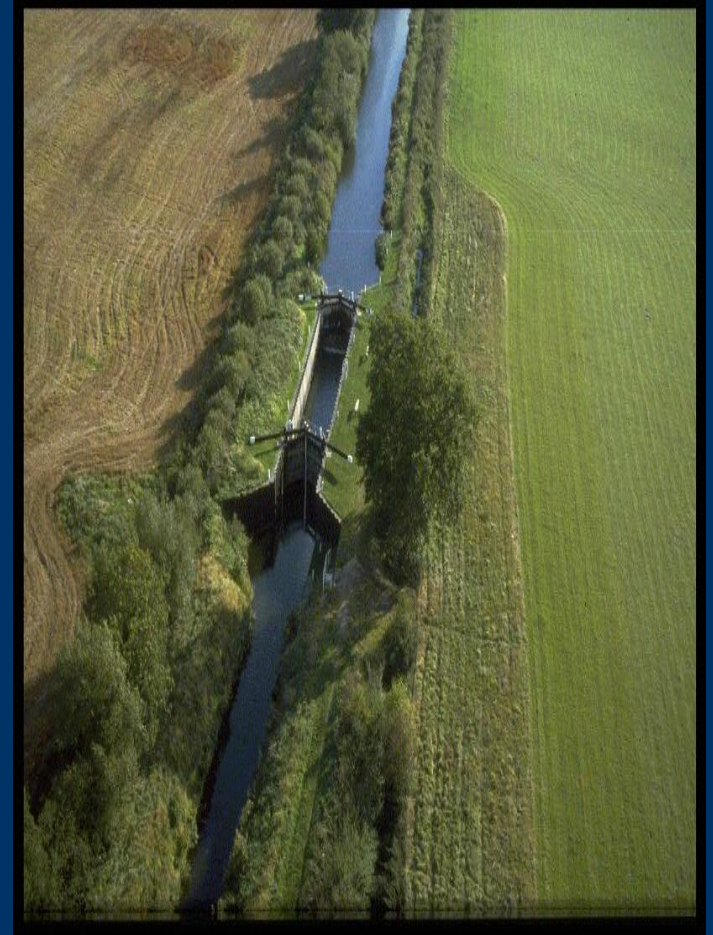
The Legacy

- Engineered solutions
- Fit for purpose
- Biodiversity and heritage sometimes neglected



British Waterways and biodiversity

- Nationally have 2000 miles of waterway;
- 100 reservoirs and lakes;
- Habitats ranging from estuaries to upland moors and lakes.
- Wales and Border Counties has a wide range of these habitats.



British Waterways and biodiversity

Within Cheshire

- Weaver Navigation
 - Reed beds, valley bottom pools and wetlands, woodlands.
- Shropshire Union Canal
 - River Gowey valley, reed margins.
- Trent and Mersey Canal
 - Flashes
- Llangollen Canal
 - Corridor
- Macclesfield Canal
 - Soft banks
- Reservoirs and feeder streams



- Other habitats
 - Towpath verges, soft banks
 - Structures and buildings
 - Embankments



- Environmental code of Practice
 - All works assessed
 - Best practice implemented
 - Compliance monitored.
- Types of works undertaken
 - Vegetation management
 - Non-native species
 - Tree management plans
 - Bank protection using soft engineering
 - Buildings and structures





**British
Waterways**
Dyfrffyrdd
Prydain

British Waterways and biodiversity

Managing habitats





**British
Waterways**
Dyfrffyrdd
Prydain

British Waterways and biodiversity

Managing habitats





**British
Waterways**
Dyfrffyrdd
Prydain

British Waterways and biodiversity

Managing habitats



- National BAP
 - Launched in 2000
 - 13 habitats and 14 species and groups of species.
 - Local waterway BAPs

- Wales and Border Counties BAP

- Targets

- Protect and increase bird nesting habitat;
 - Increase bat roosting habitat;
 - Non-native species - map occurrence, plan for control;
 - Arrest spread and control floating pennywort
 - 50% of bank protection to be of soft engineering