

Adapting the Landscape



Adapting the Landscape

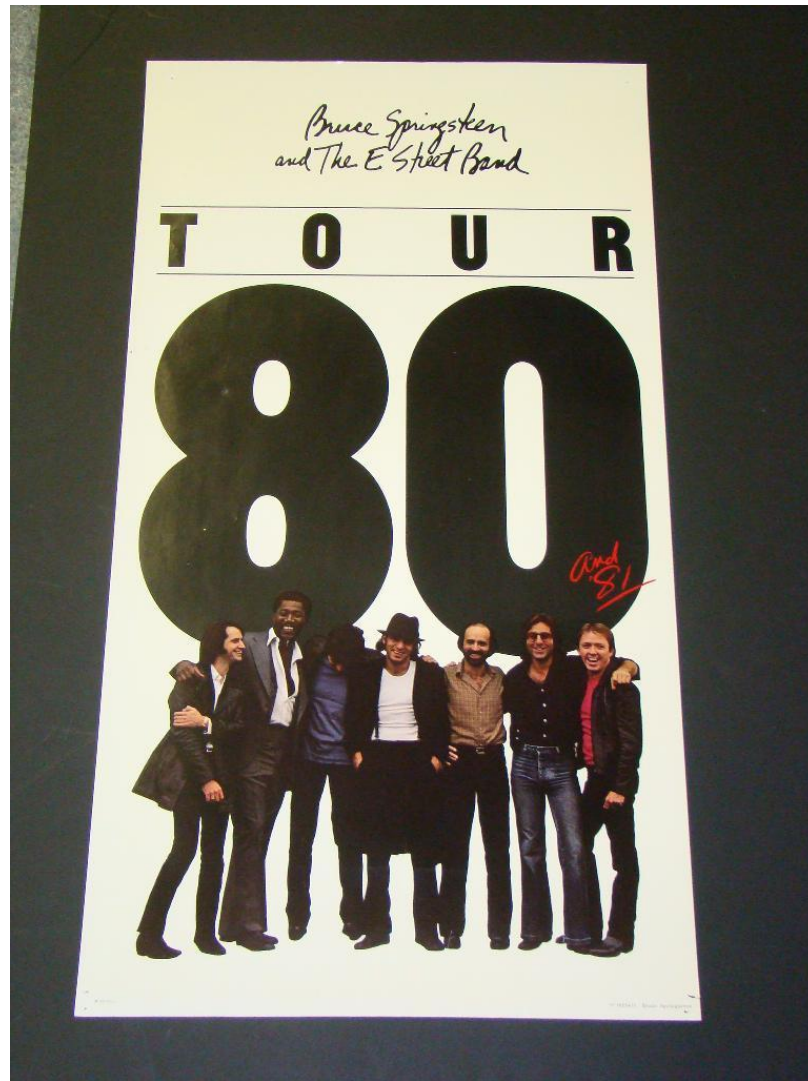
Richard Tracey
Head of
Environmental Quality



Adapting the Landscape

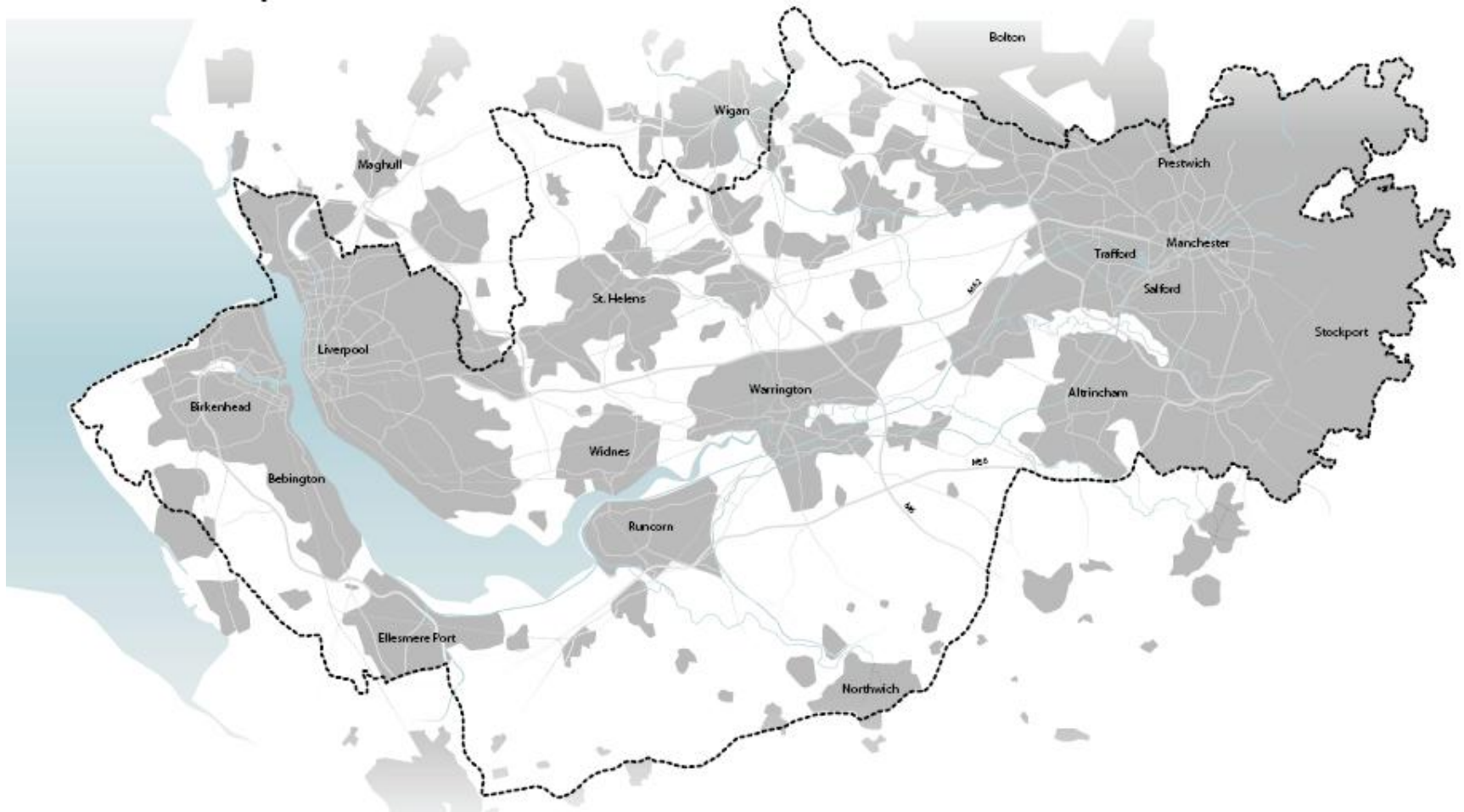


Adapting the Landscape

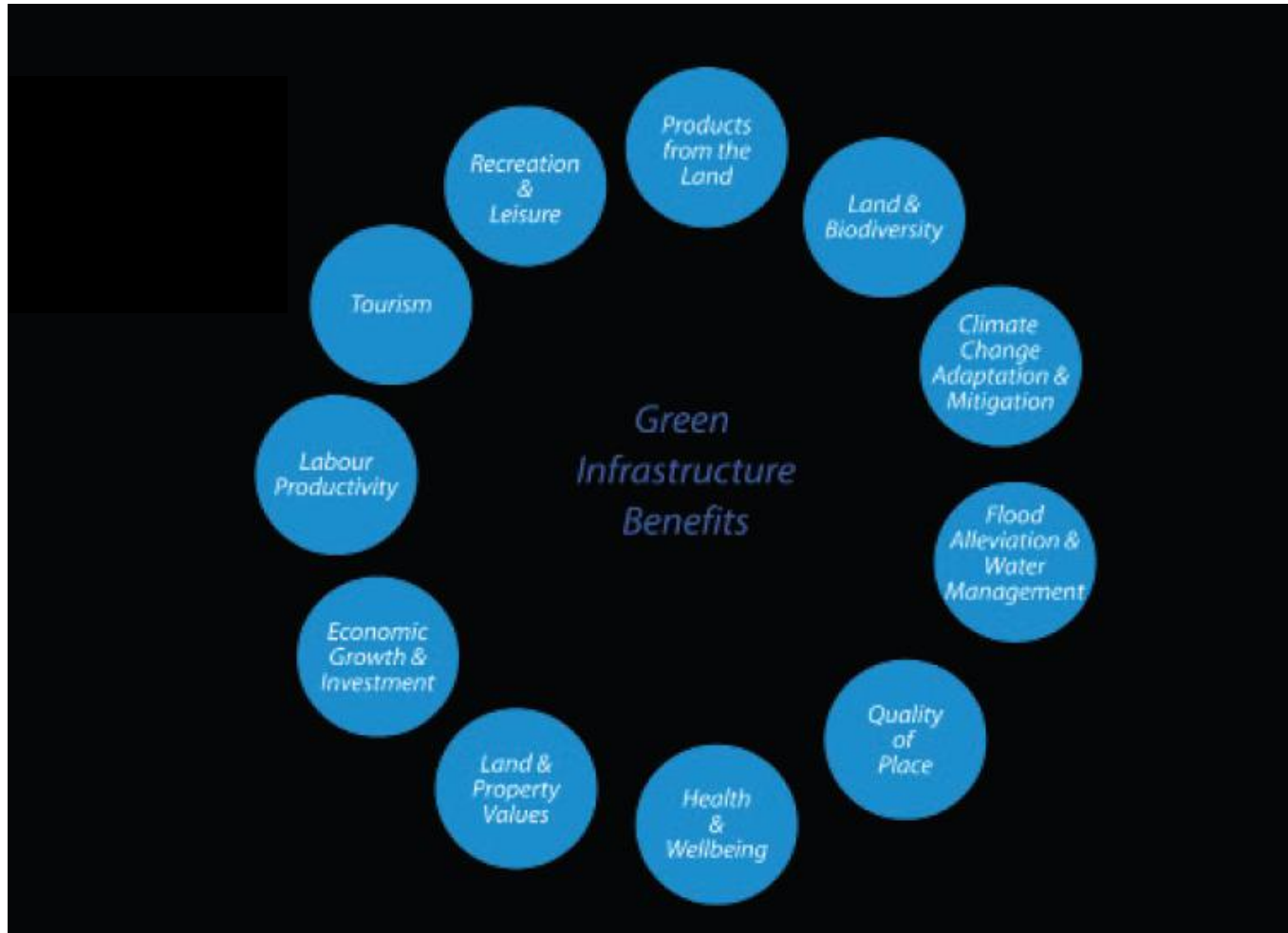


Adapting the Landscape

... the place



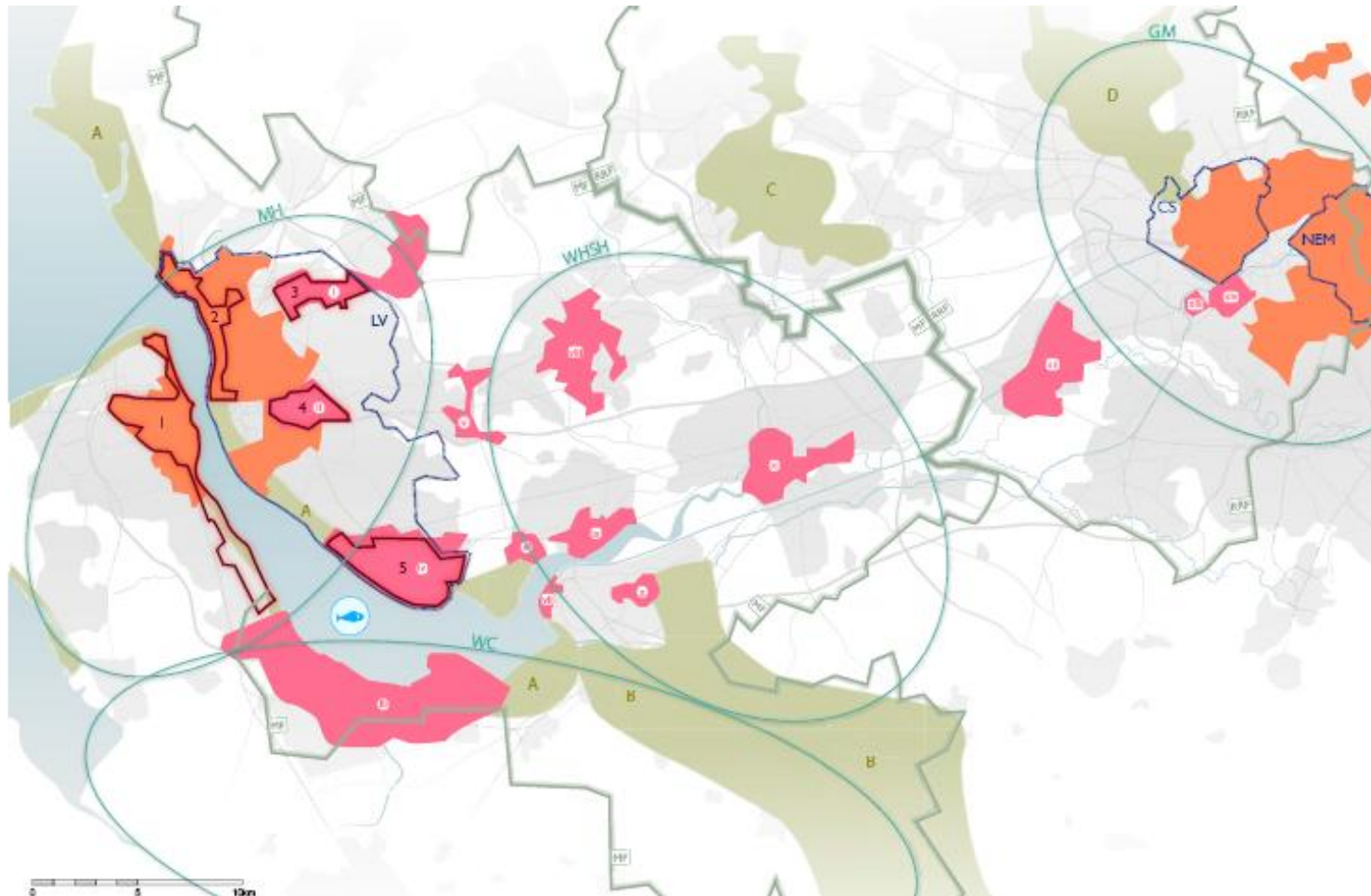
Adapting the Landscape



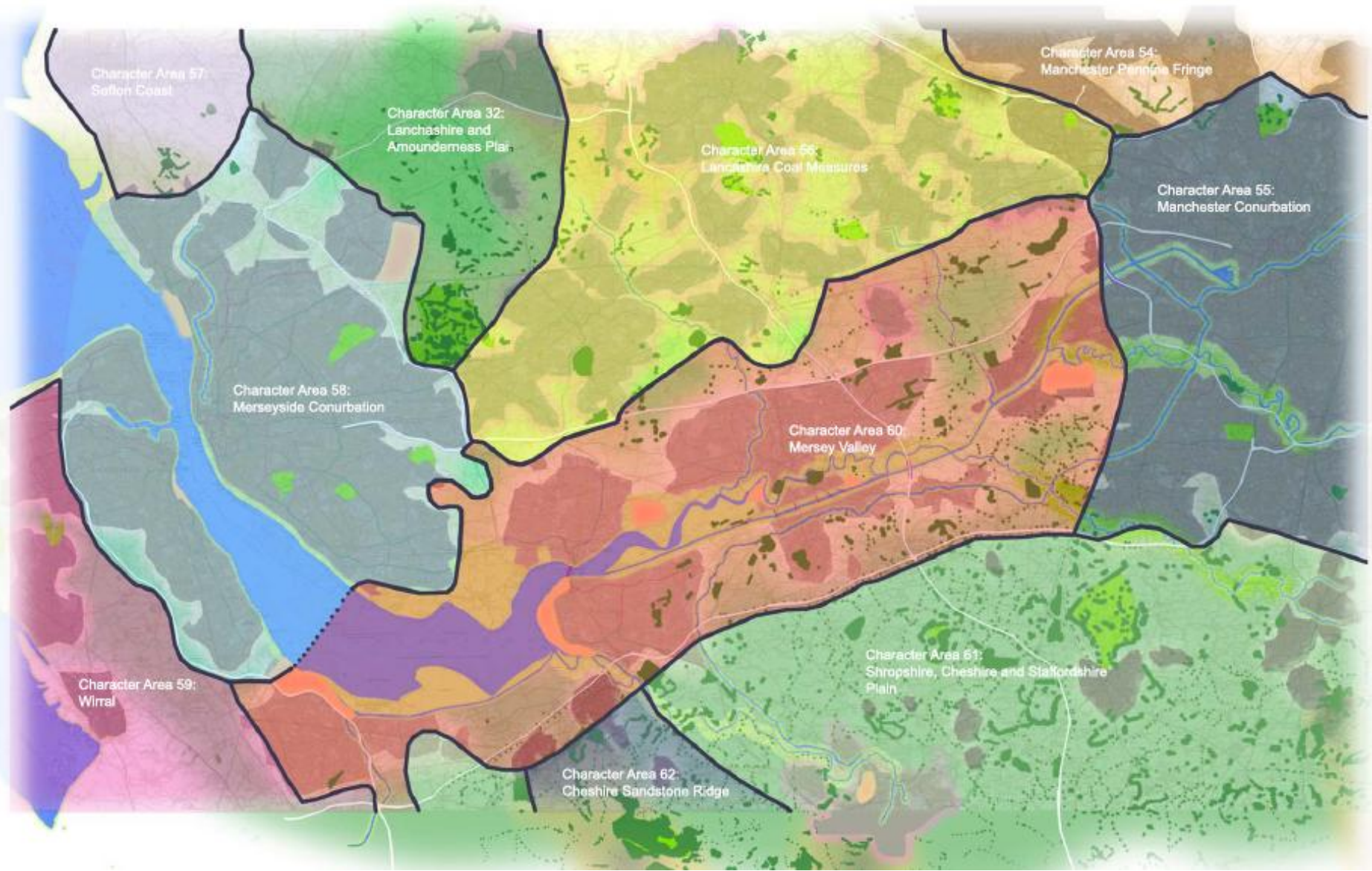
Adapting the Landscape

...regeneration initiatives

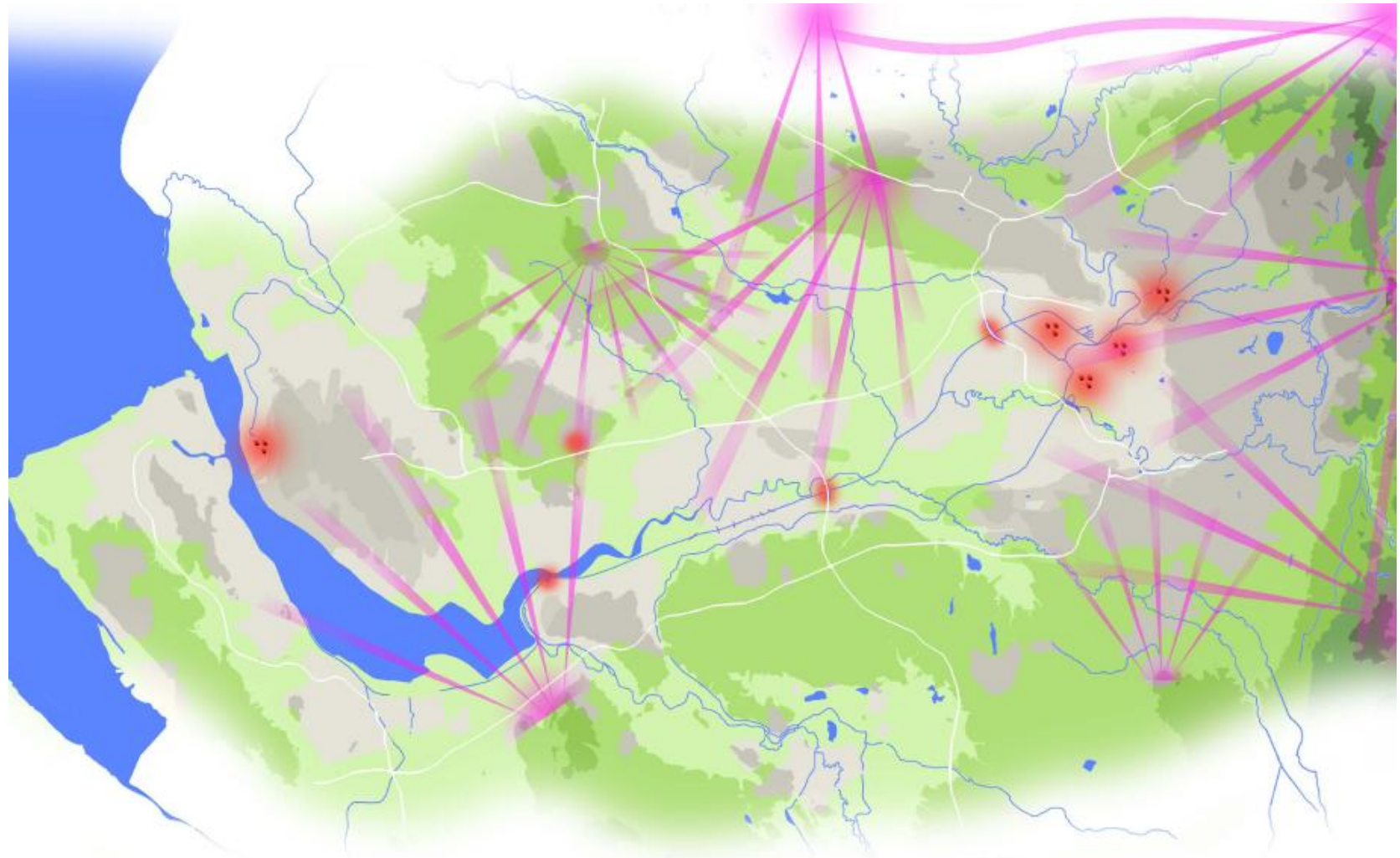
- HMMA (New Heartlands and Manchester Airports)**
- Urban Regeneration Companies**
 - LV Liverpool Vision
 - CS Central Salford
 - NEM New East Manchester
- Strategic Investment Areas**
 - 1 Wirral Waterfront
 - 2 Atlantic Gateway Northshore
 - 3 A580 Northern Fringe
 - 4 Knowledge Corridor
 - 5 Speke Halewood
- Community Forests**
 - MF Mersey Forest
 - RRF Red Rose Forest
- Other Regeneration Areas**
 - ① Approach 580
 - ② Eastern Approaches
 - ③ 4M Economic Development Zone
 - ④ Speke Garston
 - ⑤ Huton-Precoat
 - ⑥ Halebank
 - ⑦ Runcom and Western Docklands
 - ⑧ St Helens Regeneration Corridor
 - ⑨ Widnes Southern, Central and Waterfront
 - ⑩ Castlefields and Norton Priory
 - ⑪ Warrington Town Centre and Waterfront
 - ⑫ Partington and Carington
 - ⑬ Gorse Hill
 - ⑭ Old Trafford
- HCA Growth Points**
 - MH Mersey Heartlands
 - WC West Cheshire
 - WHSW Warrington/Halton/St Helens
 - GM Greater Manchester
- Regional Parks**
 - A Mersey Waterfront
 - B Weaver Valley
 - C Wigan Greenheart
 - D Croal Irwell
- Mersey Basin Campaign**



Adapting the Landscape



Adapting the Landscape



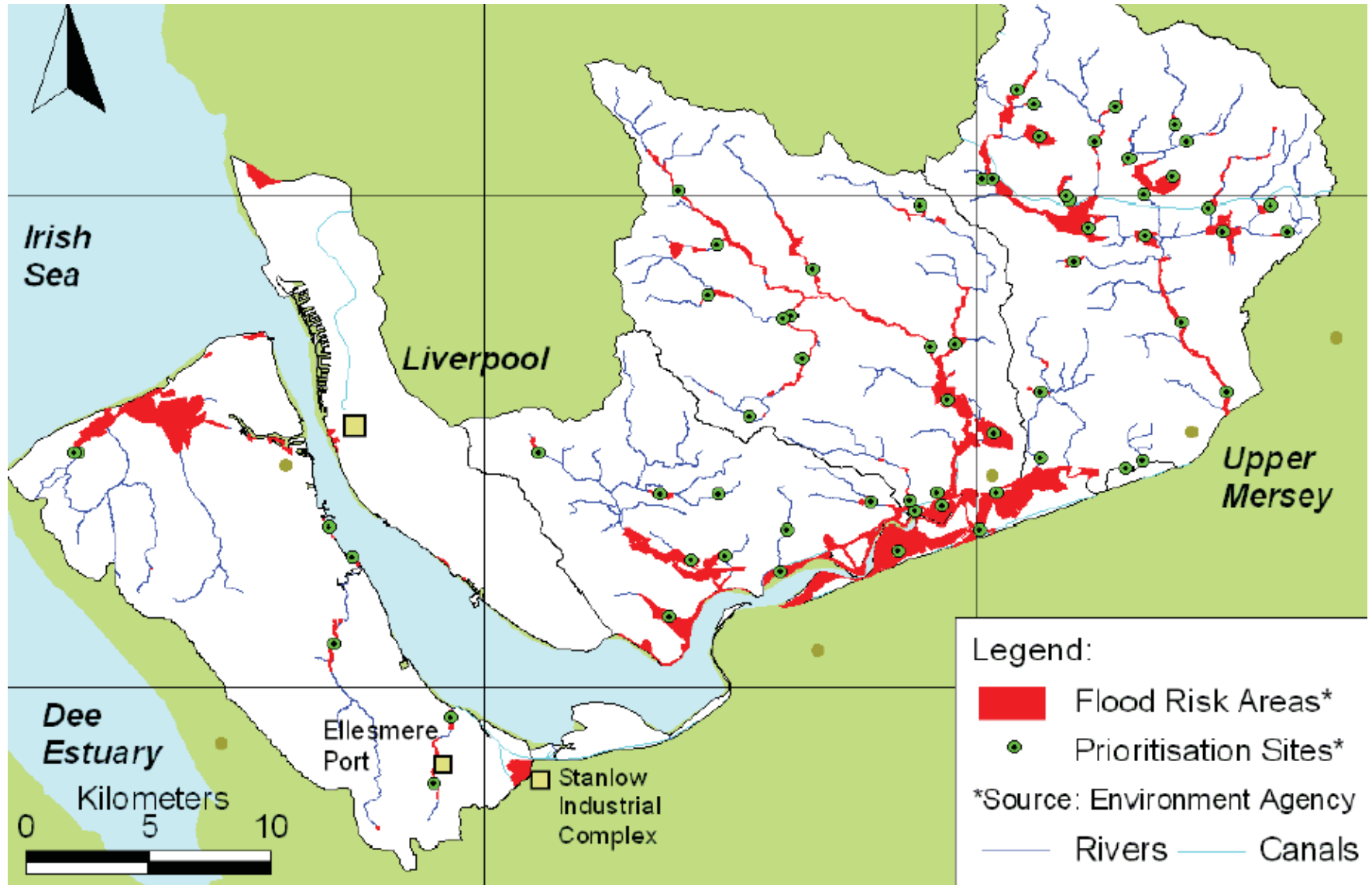
KEY: Topography		Urban area Topography		Landscape elements	
Blue	Sea level	Light grey	0-80m	Pink lines	Views from natural vantage points
Light green	0-80m	Medium grey	80-160m	White lines	Key sightlines
Medium green	80-160m	Dark grey	160-240m	Red dots	View of or from key man made structures
Dark green	160-240m	Lightest grey	240-320m	Red dots with lines	High rise blocks
Lightest green	240-320m	Lightest grey	320-400m	Green lines	Motorways
Lightest green	320-400m	Lightest grey		Blue lines	Rivers and Canals



Adapting the Landscape



Adapting the Landscape



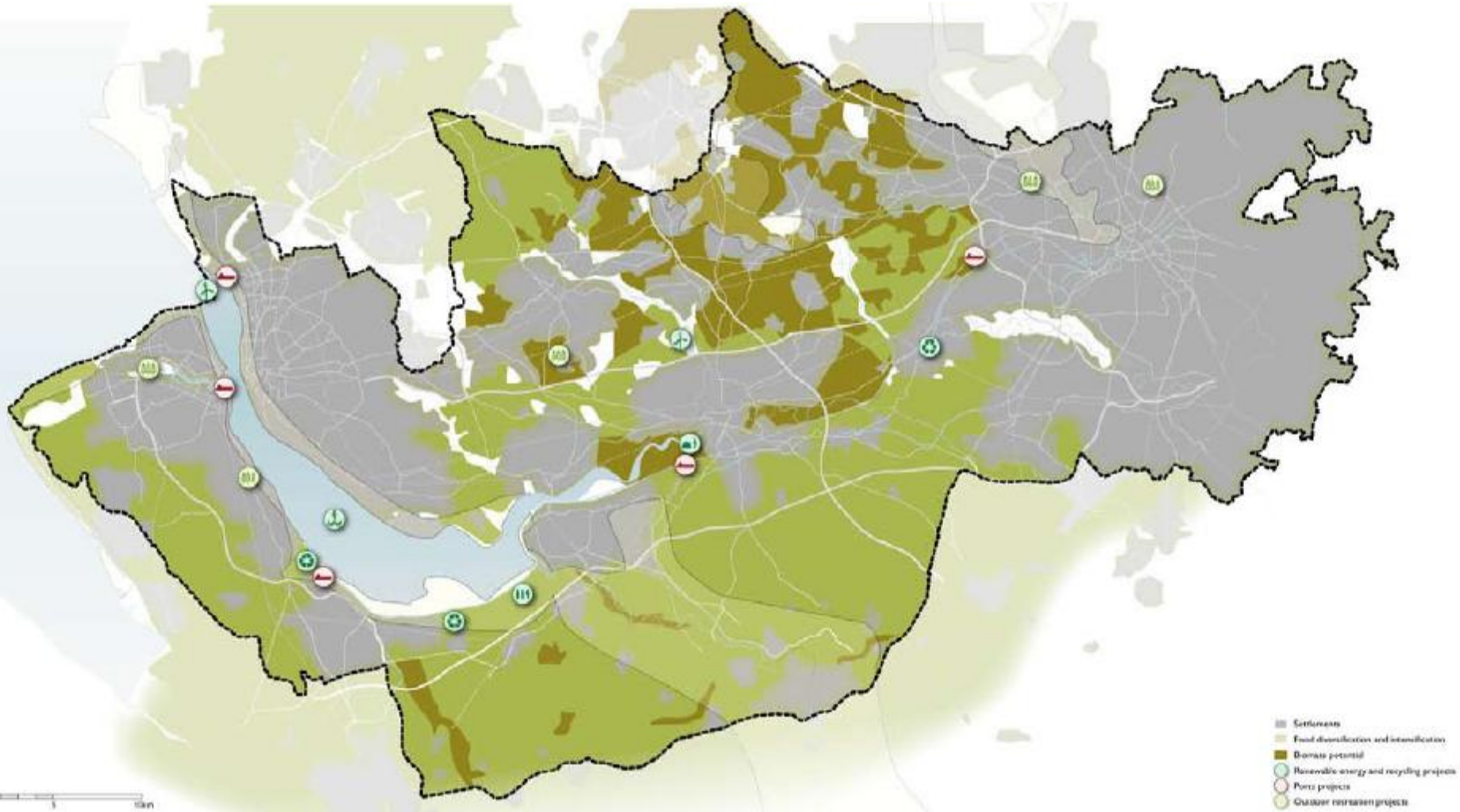
Adapting the Landscape

... 'status quo' scenario



Adapting the Landscape

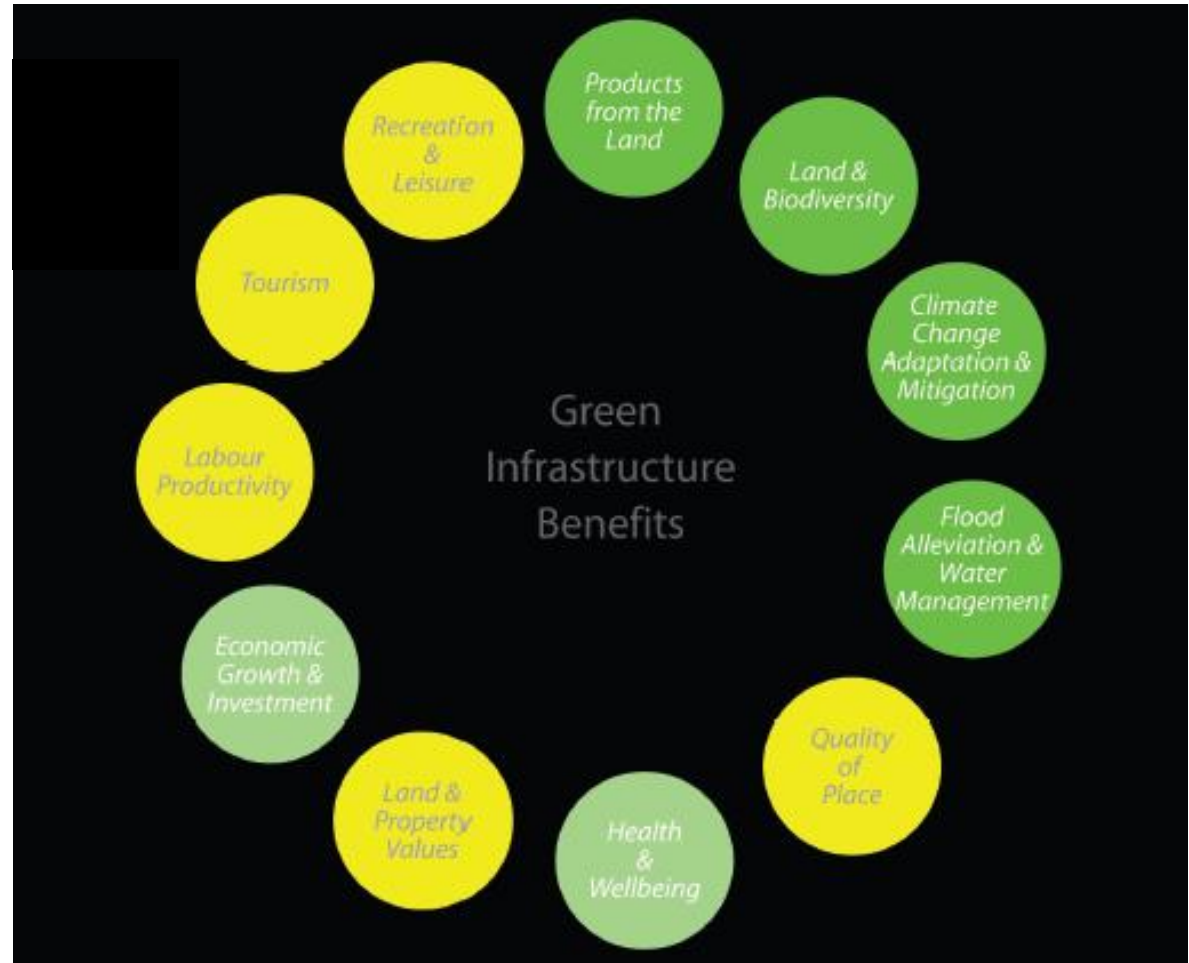
Mersey Bio-region



Adapting the Landscape

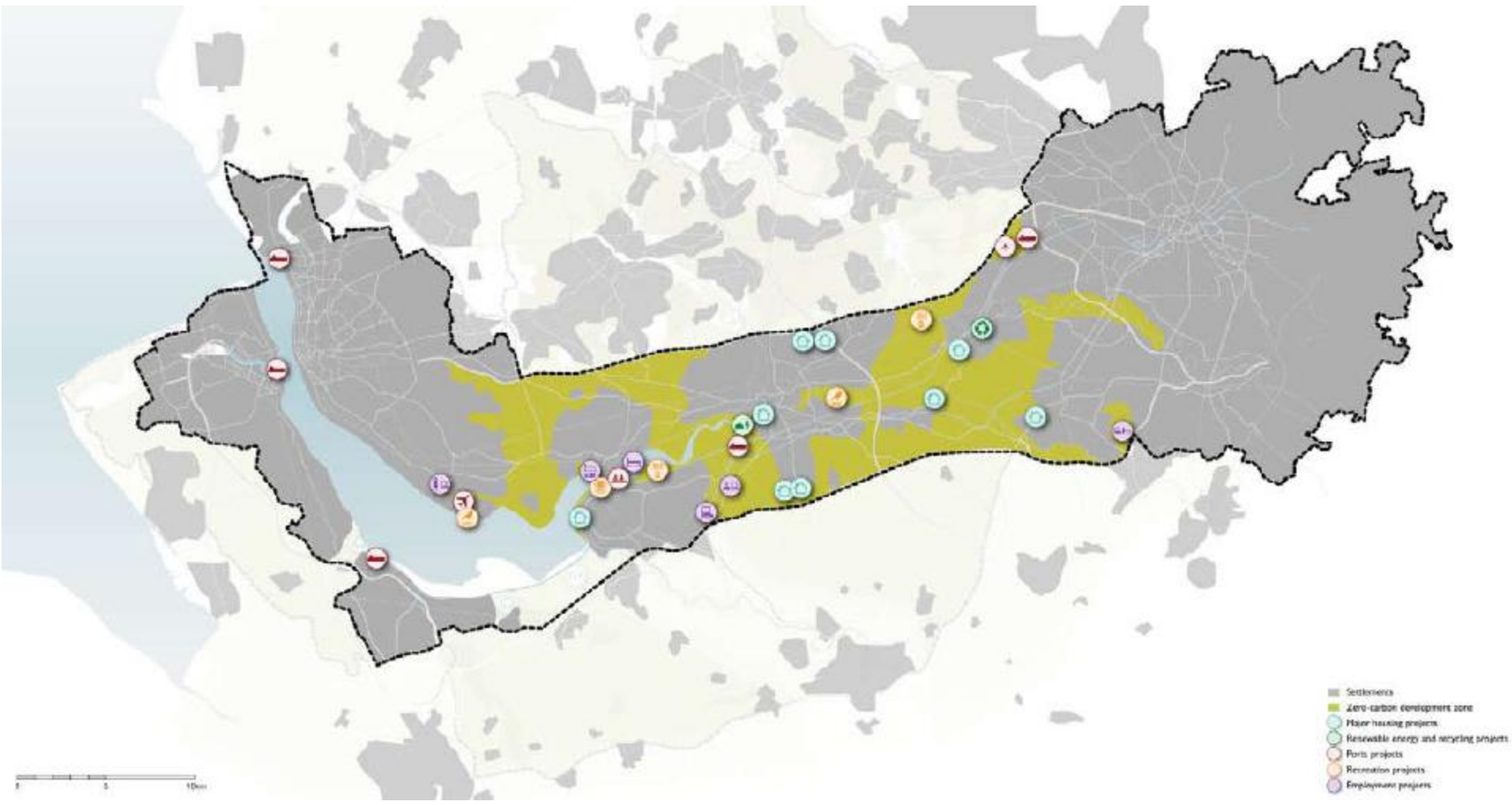
...Mersey Bio-region challenges and benefits

- Multiple ownership
- Communication
- Biodiversity
- Planning
- Local action



Adapting the Landscape

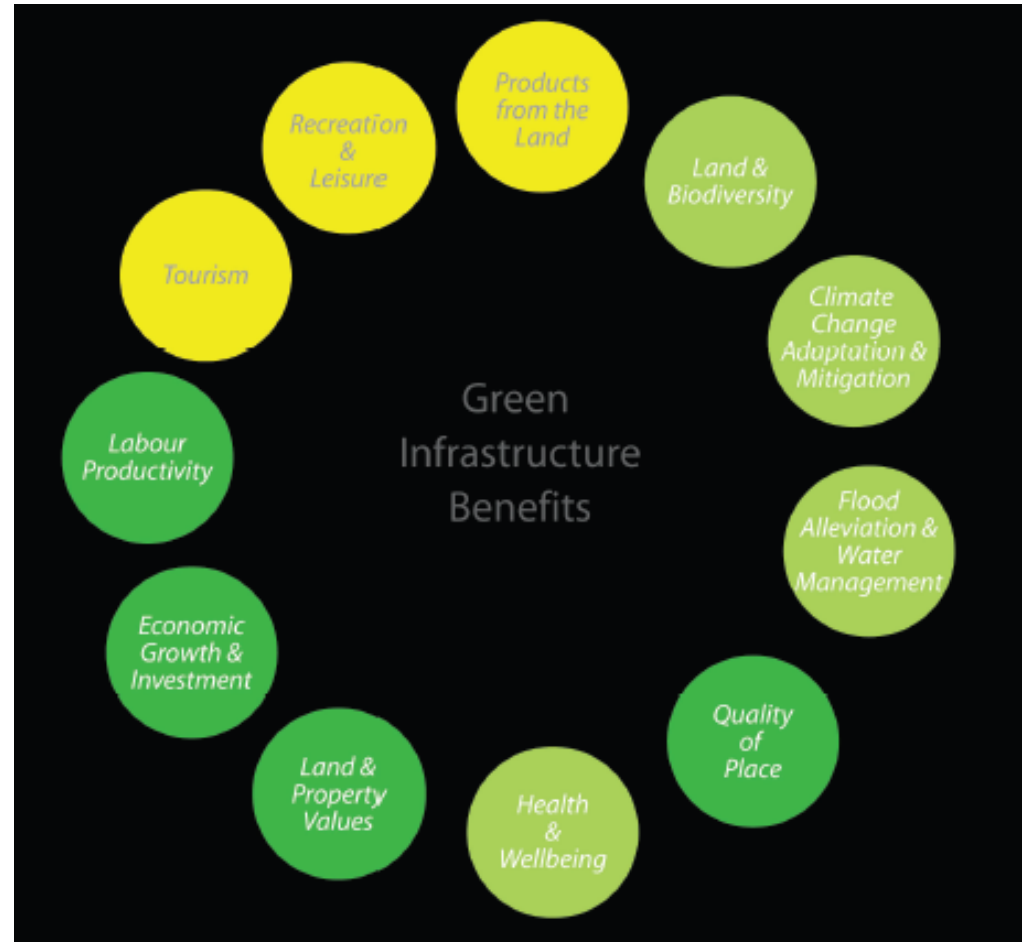
Mersey Innovation Axis



Adapting the Landscape

...Mersey Innovation Axis challenges and benefits

- Behaviour change
- Transport
- Recession



Adapting the Landscape

Mersey Playground



Adapting the Landscape

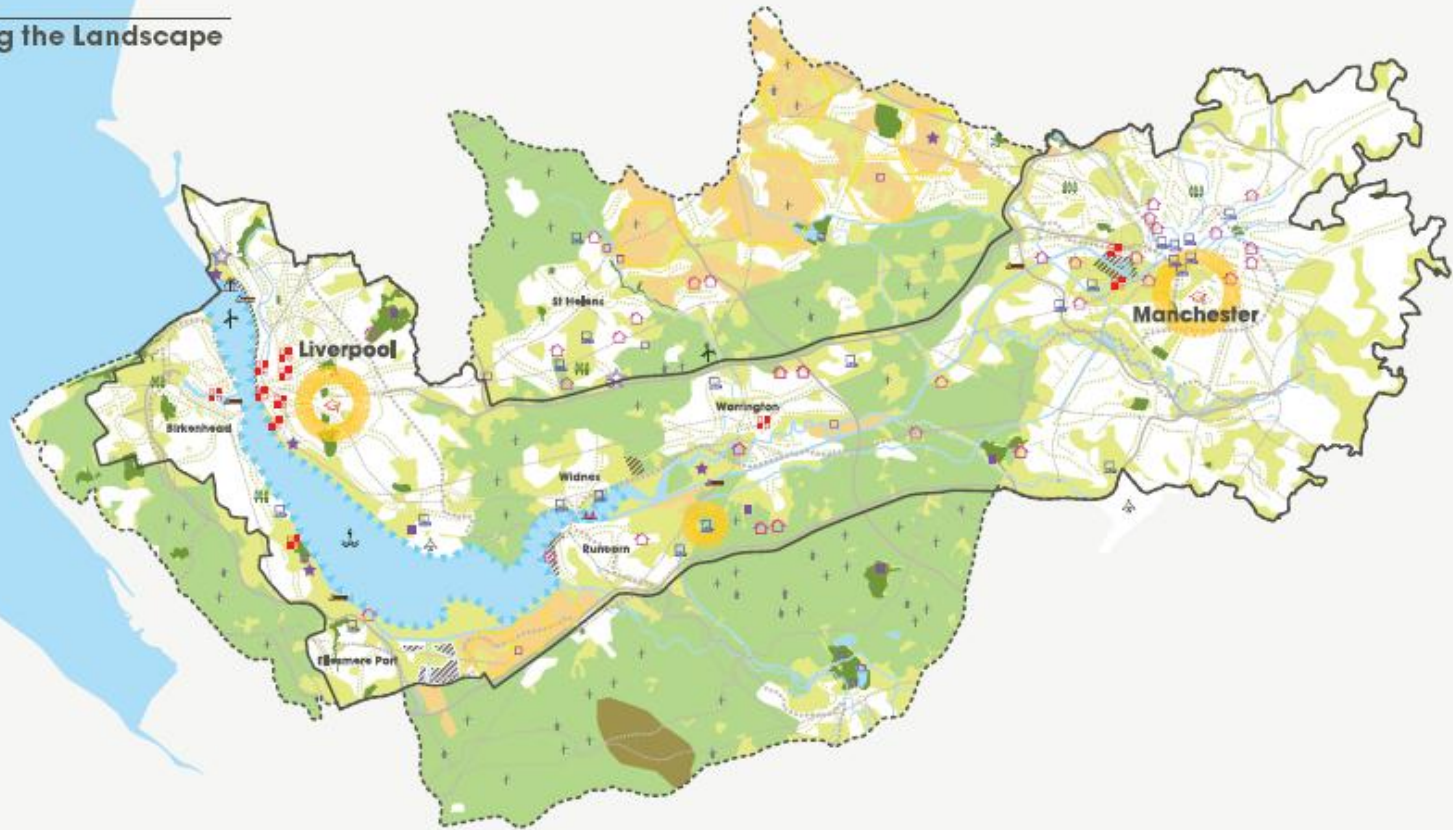
...Mersey Playground challenges and benefits

- Waterfront access
- Water quality
- Investment
- Marketing
- Density of activity



Adapting the Landscape

Adapting the Landscape



- | Connection | Business | Lifestyle | Play | Creativity | Food | Environment | Energy |
|--|---|--|--|---|---|--|---|
| <ul style="list-style-type: none"> Waterways Railways Motorways | <ul style="list-style-type: none"> Industrial sites to be redeveloped New employment location Refrigeration container shipping terminal Manchester Shipping Canal port investment Mersey Gateway suspension bridge | <ul style="list-style-type: none"> Other open land use - golf courses, equity cemetery etc. Settlements Lower Mersey Basin and major urban areas Housing site of more than 300 dwellings Major mixed-use scheme | <ul style="list-style-type: none"> Regulated and country parks Dolmores Forest National cycleways Regional cycleways Mersey waterpark New leisure destinations from industrial sites Country houses and estates Country parks on former industrial sites Newlands | <ul style="list-style-type: none"> Innovation zone Landscape icons (public art) Innovation cluster University expansion | <ul style="list-style-type: none"> Existing productive agricultural land New forest farms | <ul style="list-style-type: none"> Waste management Urban greening | <ul style="list-style-type: none"> Undeveloped and low-intensity farmed open land with biomass potential Mersey tidal power Wind farm Area with wind farm potential |

Green and blue landscape potential
 Mapping by Urban Habitats and URB Calculation
 Additional design by Creative Conson



Adapting the Landscape



Reclaim the Northwest !

**Final Report
of the Northwest Land Reclamation Review
Steering Group**

May 2001



Adapting the Landscape



Adapting the Landscape

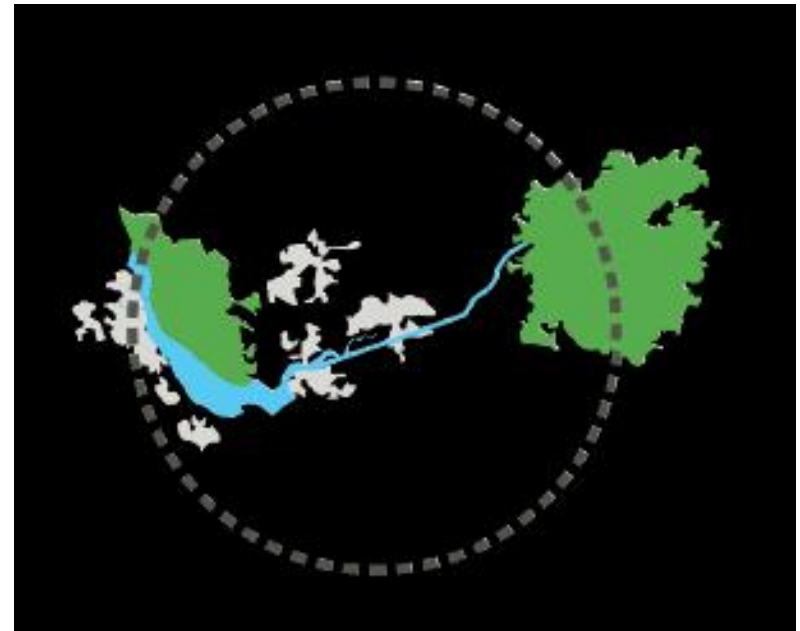
... the new black ?



Adapting the Landscape

This is not a corridor...it's a room

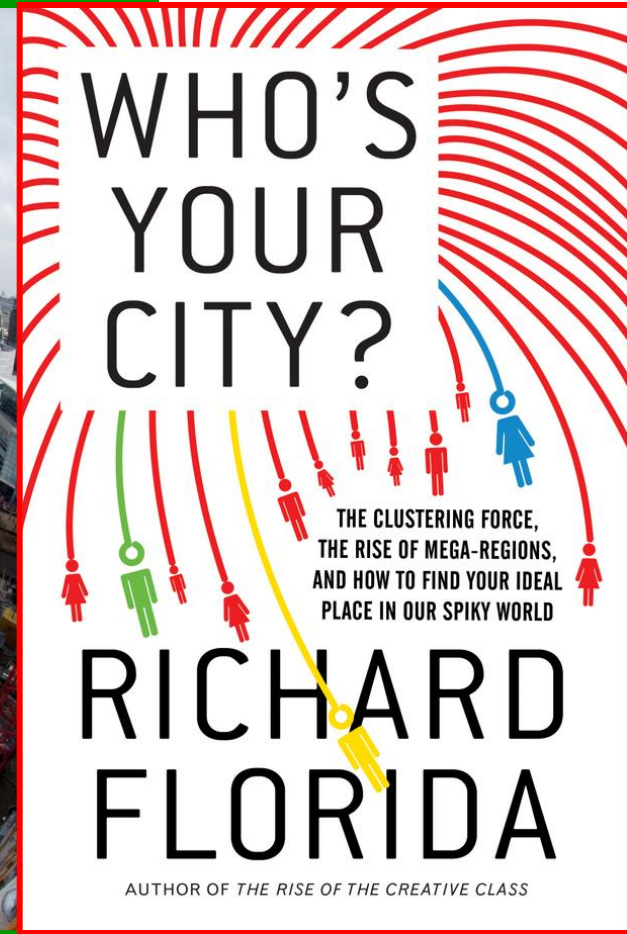
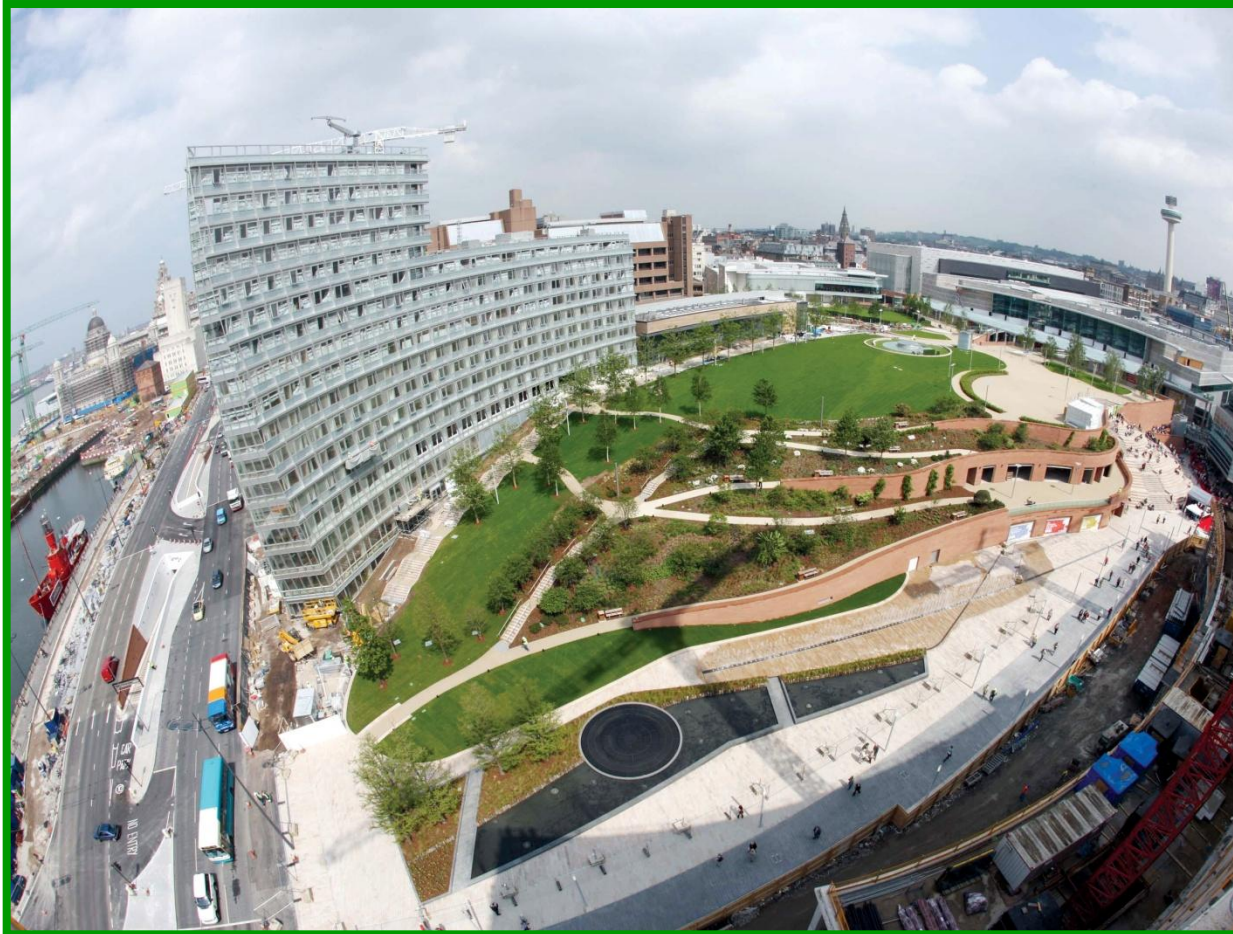
“The environmental debate isn't about muesli and tree hugging. It's about attracting high skilled people and if you want to do that, a green environment is an important asset.”



A landscape for prosperity



Adapting the Landscape



Adapting the Landscape

“.. This land is my land, this land is your land, this land was made for you and me...”

(Woody Guthrie)



Adapting the Landscape

